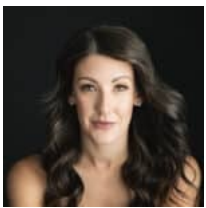




MERRITT ISLAND SQUARE - RETAIL SPACE FOR LEASE

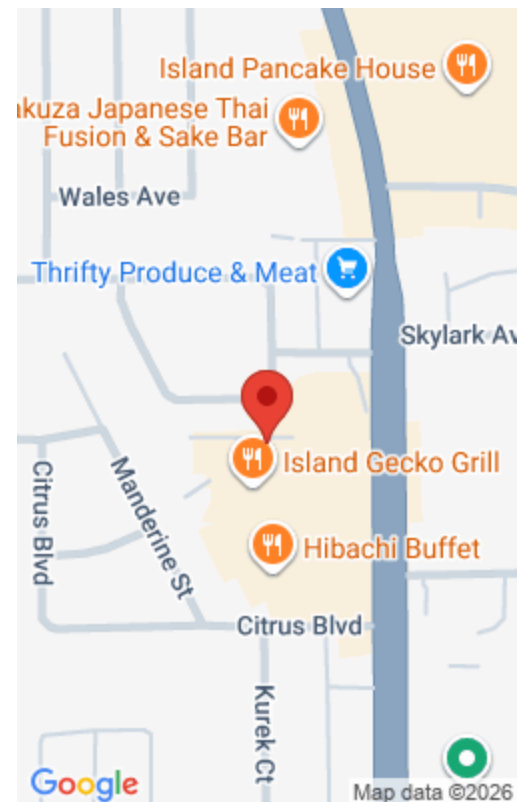
<https://jmrealestate.com>

High Traffic & High Visibility on Merritt Island's Courtenay Parkway 600-14,000 SF Retail Spaces Available Anchored by Dollar Tree & Tuesday Morning Retail / Restaurant / Office / Fitness Opportunities Excellent Visibility, Access & Frontage 350+ Parking Spaces Located Between SR 520 & SR 528 Near Cocoa Beach, Port Canaveral, Merritt Square Mall, Rockledge & [...]



Courtney Smith

- Retail
- Commercial Lease
- 64132 sq ft



Rooms & Units Description

Unit #: 7

Total Units: 16

Unit 1: Unit Description: Retail Space

Unit 1: # Units (This Type): 1

Unit 2: Unit Description: Retail Space

Unit 2: # Units (This Type): 1

Unit 3: Unit Description: Retail Space

Unit 3: # Units (This Type): 1

Unit 4: Unit Description: Retail Space

Unit 4: # Units (This Type): 1

Unit 5: Unit Description: Retail Space

Unit 5: # Units (This Type): 1

Unit 6: Unit Description: Retail Space

Unit 6: # Units (This Type): 1

Unit 7: Unit Description: Retail Space

Unit 7: # Units (This Type): 1

of Units: 16

Unit 1: Unit or Suite Number: 715-717

Unit 1: Size: 2,600 SF

Unit 2: Unit or Suite Number: 723

Unit 2: Size: 1,250 SF

Unit 3: Unit or Suite Number: 725

Unit 3: Size: 600 SF

Unit 4: Unit or Suite Number: 745

Unit 4: Size: 10,312 SF

Unit 5: Unit or Suite Number: 765

Unit 5: Size: 4,000 SF

Unit 6: Unit or Suite Number: 771

Unit 6: Size: 4,500 SF

Unit 7: Unit or Suite Number: 777

Unit 7: Size: 7,020 SF

Location Details

County: Brevard County

Area Desc: Situated near Cocoa Beach, Merritt Island, Rockledge and Viera East.

Location: Other: N. Courtenay Parkway

Zoning: BU-1

Directions: Located on N. Courtenay Parkway in Merritt Island, Florida.

Location: Merritt Island

Current Zoning: BU-1

Property Details



Lot Description: Retail Shopping Center
Property Use: Retail Space
Possession: Immediate
Frontage Description: N. Courtenay Parkway
Frontage
Land Use: Commercial
SqFt - Living: 64,132 SF
of Lots: 1
Lease Includes: Excellent Visibility, Access &
Frontage
Terms Considered: NNN Lease

Prop Type: Commercial
List Type: For Lease
Construction: Concrete Block Construction
Floor: 1
Land Use: Future Land Use Zoning: BU-1
Acreage: 6.4 Acres
Flooring: Concrete / Tile
Showing Instructions: Call Listing Agent
Courtney Smith at 321-423-4305

Property Features

Utilities: Electricity, Water, Sewer

Common Amenities: 350+ Parking Units,
Monument Signage, Excellent Visibility, High Traffic
Count

Utilities Available: Electric, Water, Sewer

Exterior Finish: Stucco

Style: Retail Shopping Center

Cooling: Central Air

Heating: Central

Heat: Central Electric

Roof: Flat Roof

Parking Spaces: 350+

Open Parking Spaces: Yes

Front Faces: N. Courtenay Parkway

Road Surface: Paved

Fire Protection: Fire Sprinkler System

Acres: 6.4

% Air Conditioned or Heated: 100%

Ceiling Type: Dropped Ceiling

Flooring: Other: Concrete / Tile

Construction: Other: Concrete Block Construction

Miscellaneous

Virtual Tour: Array

Building Details



Floor covering: Concrete, Tile

Roof: Flat Roof

Exterior material: Concrete Block, Stucco

Parking: 350+ Parking Units

Amenities & Features

Amenities: 350+ Parking Spaces Excellent Visibility
High Traffic Count Monument Signage National
Tenants N. Courtenay Parkway Frontage

Features: High Visibility Monument
Signage National Tenants High Traffic
Count Retail Frontage

