



# OFFICE SPACE FOR LEASE

5205 Babcock Street NE | Palm Bay, FL 32905

803 SF Available | 2nd Floor Office Suite

\$14.00/SF/YR

Available Now

## PROPERTY HIGHLIGHTS

- Busy Babcock St - 33,000 CPD
- Between US 1 & I-95
- Freshly Painted Exterior
- Ample Surface Parking
- Monument Signage
- Stable Local Ownership
- Reception / Waiting Area
- Open Work Area
- Private Office
- One Restroom
- Storage Area

## LOCATION OVERVIEW

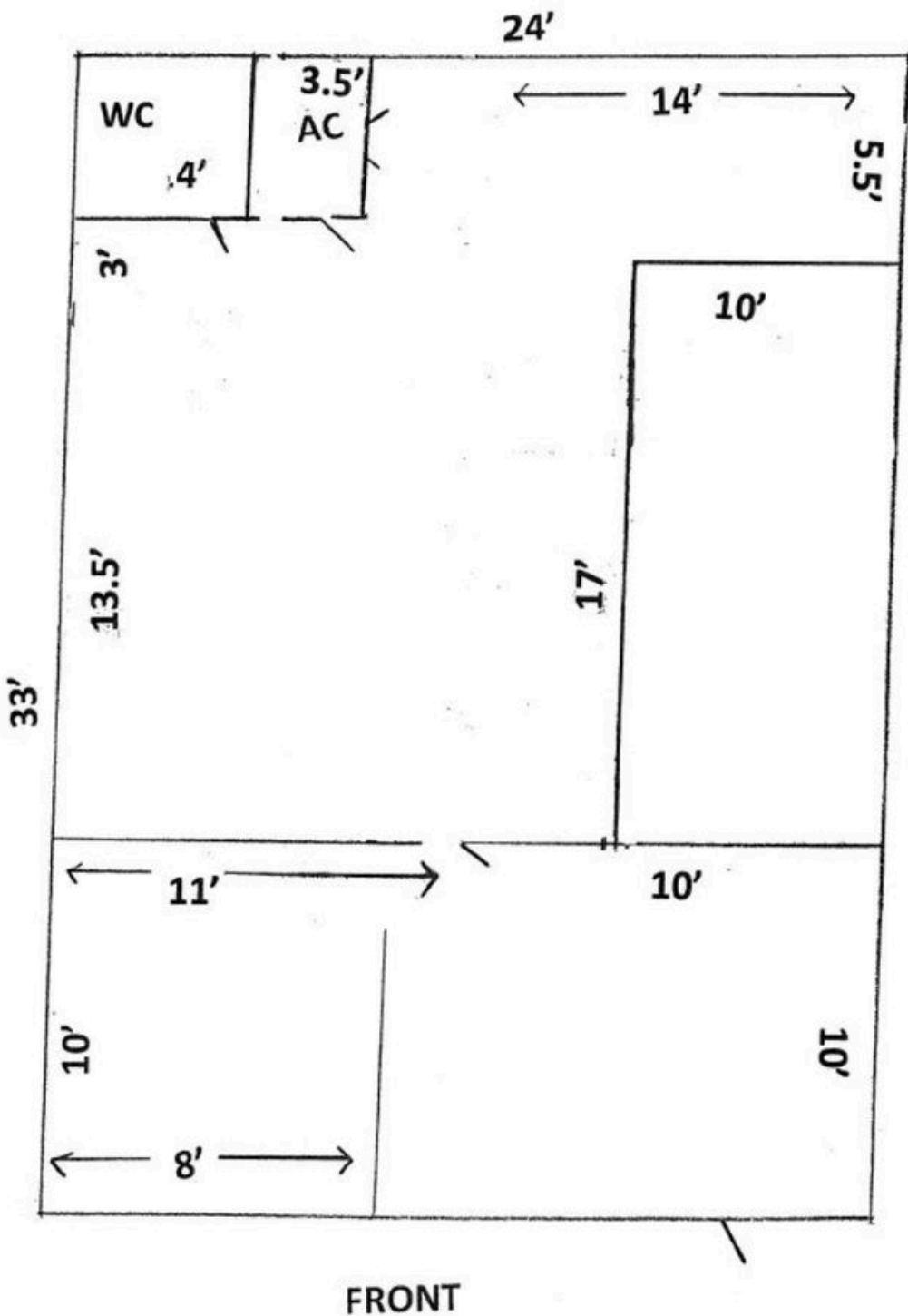
Located on busy Babcock Street with high traffic counts of 33,000 CPD. Situated between US 1 & I-95 to the East & West and Palm Bay Road & Malabar Road to the North & South. Stable local ownership with 2nd floor office suite featuring reception area, open work area, and private office.

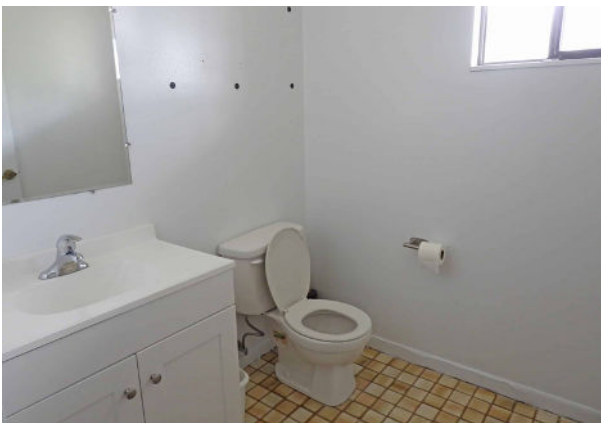
**Nicole Reed** | Broker Associate | JM Real Estate, Inc.

Office: 321.242.2882 x 201 | Cell: 314.795.4339 | [Nicole@JMRealEstate.com](mailto:Nicole@JMRealEstate.com)

**OFFICE SPACE FOR LEASE**

**5205 BABCOCK STREET NE**







## SUITE DETAILS

### LEASE INFORMATION

Rental Rate: \$14.00/SF/YR

Suite: Suite 6 | 803 SF

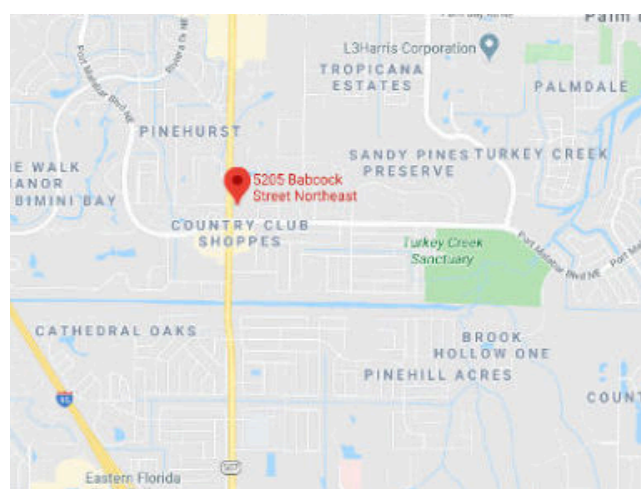
Availability: Available Now

*Lease rate does not include certain property expenses.*

### FEATURES

- Reception / Waiting Area
- Open Work Area
- Private Office
- One Restroom
- Storage Area
- 2nd Floor Office Suite

## LOCATION MAP



5205 Babcock Street NE, Palm Bay, FL 32905

## CONTACT FOR LEASING INFORMATION



### Nicole Reed

Broker Associate | JM Real Estate, Inc.

Office: 321.242.2882 x 201

Cell: 314.795.4339

Email: [Nicole@JMRealEstate.com](mailto:Nicole@JMRealEstate.com)

Information contained herein has been obtained from others and is considered reliable; however, prospective purchasers, agents, and lessees should verify all information independently. We make no guarantee, warranty, or representation as to the accuracy of this information. Licensed Real Estate Broker.