

OFFICE SPACE FOR LEASE

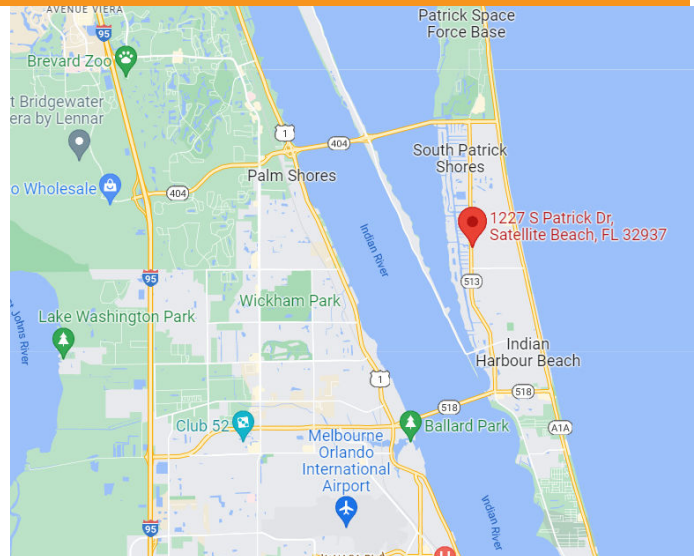
REGENCY CENTER

1227 S Patrick Drive, Satellite Beach, FL 32937

FOR LEASE



- Beachside Business Center on S Patrick Drive in Satellite Beach
- Close to Patrick Space Force Base
- Between the Eau Gallie Causeway and the Pineda Causeway for Great Access between US 1 and A1A
- A Variety of Suite Sizes Available
- Suite 102- 1,200 SF - \$17/SF/YR + \$4.89/SF/YR NNN
- Suite 111- 1,909 SF - \$15/SF/YR + \$4.89/SF/YR NNN
- Suite 122 - 2,285 SF - \$17/SF/YR + \$4.89/SF/YR NNN
- Suite 220- 3,450 SF - \$15/SF/YR + \$4.89/SF/YR NNN
- Great Spaces for Office and Tech Users



JMREALESTATE.COM

Courtney Smith
JM Real Estate, Inc.
Office: 321.242.2882 x 209
Cell: 321.423.4305
Courtney@JMRealEstate.com

Information contained herein has been obtained from others and is considered to be reliable; however, a prospective purchaser, agent, or lessee is expected to verify all information to their satisfaction. We make no guarantee, warranty, or representations herein. Licensed Real Estate Broker.

OFFICE SPACE FOR LEASE

REGENCY CENTER

1227 S Patrick Drive, Satellite Beach, FL 32937



	1 mile	3 mile	5 mile
2010 Population	7,677	29,703	76,400
2022 Population	8,422	32,436	83,107
2027 Projection	9,014	34,690	88,827
Growth 2010-2022	0.8%	0.8%	0.7%
Growth 2022-2027	1.4%	1.4%	1.4%
Median Age	48.8	49.7	47.6
Bachelor's or Higher	44%	42%	35%
U.S. Armed Forces	67	324	418



JMREALESTATE.COM

Courtney Smith
JM Real Estate, Inc.
Office: 321.242.2882 x 209
Cell: 321.423.4305
Courtney@JMRealEstate.com

Information contained herein has been obtained from others and is considered to be reliable; however, a prospective purchaser, agent, or lessee is expected to verify all information to their satisfaction. We make no guarantee, warranty, or representations herein. Licensed Real Estate Broker.

OFFICE SPACE FOR LEASE

REGENCY CENTER

1227 S Patrick Drive, Satellite Beach, FL 32937



Suite 102 - 1,200 SF
Office with Reception, Large Work Area, and Private Offices



JMREALESTATE.COM

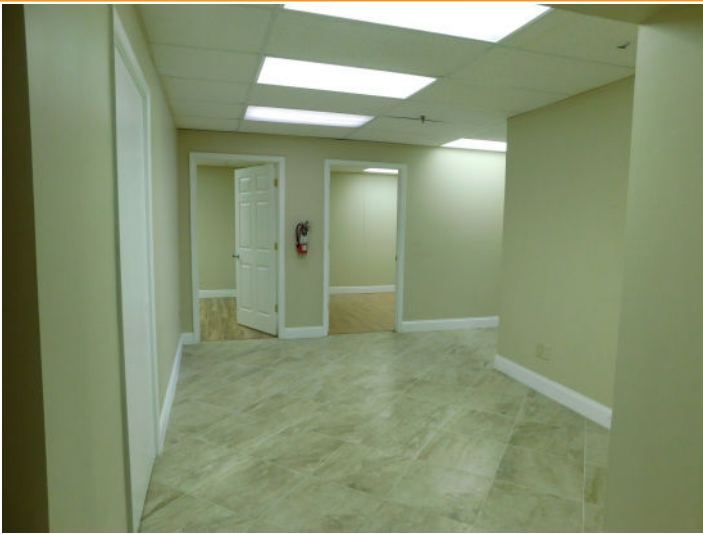
Courtney Smith
JM Real Estate, Inc.
Office: 321.242.2882 x 209
Cell: 321.423.4305
Courtney@JMRealEstate.com

Information contained herein has been obtained from others and is considered to be reliable; however, a prospective purchaser, agent, or lessee is expected to verify all information to their satisfaction. We make no guarantee, warranty, or representations herein. Licensed Real Estate Broker.

OFFICE SPACE FOR LEASE

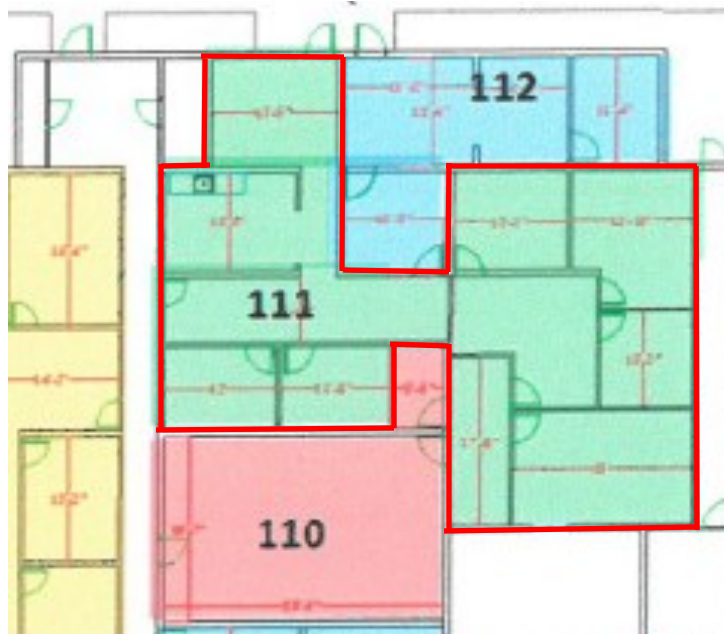
REGENCY CENTER

1227 S Patrick Drive, Satellite Beach, FL 32937



Suite 111 - 1,909 SF

Nice New Flooring Throughout, Kitchenette, Multiple Private Offices & Conference Room



JMREALESTATE.COM

Courtney Smith

JM Real Estate, Inc.

Office: 321.242.2882 x 209

Cell: 321.423.4305

Courtney@JMRealEstate.com

Information contained herein has been obtained from others and is considered to be reliable; however, a prospective purchaser, agent, or lessee is expected to verify all information to their satisfaction. We make no guarantee, warranty, or representations herein. Licensed Real Estate Broker.

OFFICE SPACE FOR LEASE

REGENCY CENTER

1227 S Patrick Drive, Satellite Beach, FL 32937



Suite 122 - 2,285 SF
Tile Flooring, Kitchenette, Multiple Private Offices, Conference Room



JMREALESTATE.COM

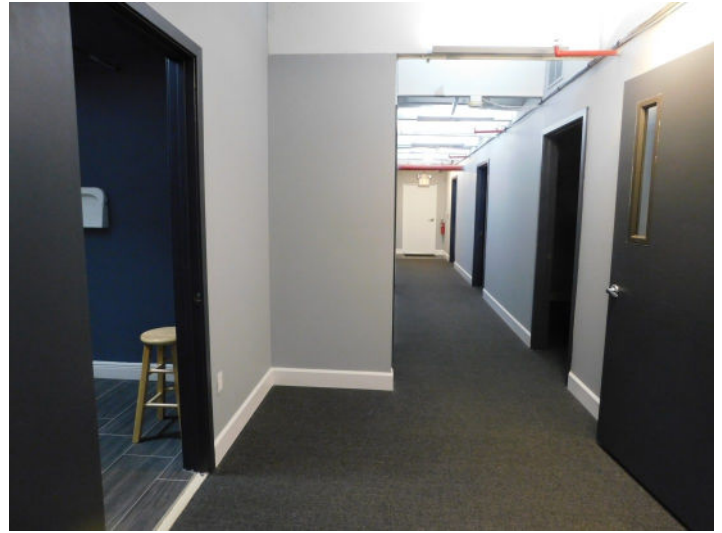
Courtney Smith
JM Real Estate, Inc.
Office: 321.242.2882 x 209
Cell: 321.423.4305
Courtney@JMRealEstate.com

Information contained herein has been obtained from others and is considered to be reliable; however, a prospective purchaser, agent, or lessee is expected to verify all information to their satisfaction. We make no guarantee, warranty, or representations herein. Licensed Real Estate Broker.

OFFICE SPACE FOR LEASE

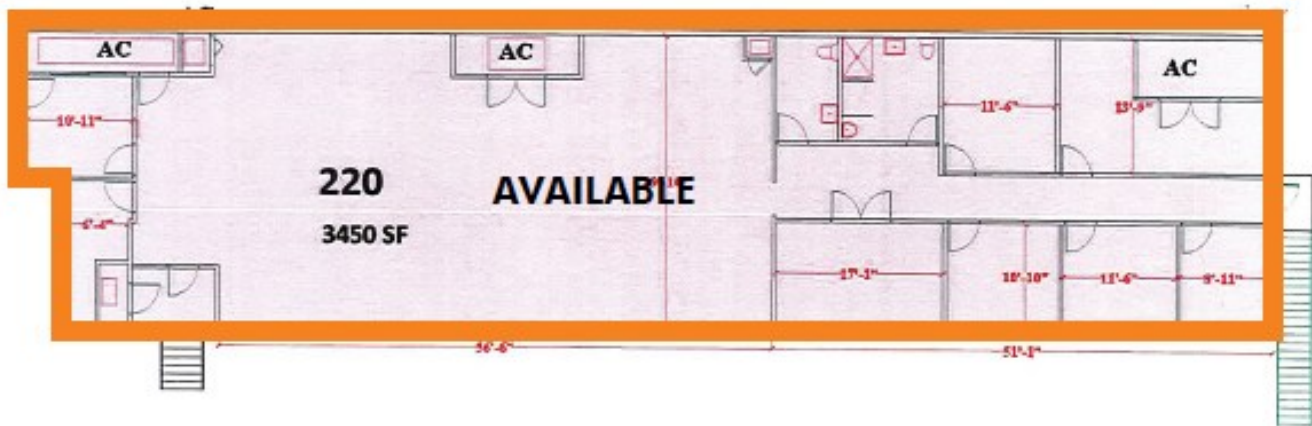
REGENCY CENTER

1227 S Patrick Drive, Satellite Beach, FL 32937



Suite 220 - 3,450 SF

Multiple Private Offices, 2 Large Restrooms, and a Very Large Room which Could be Used for Cubicles or Open Shared Work Space



JMREALESTATE.COM

Courtney Smith

JM Real Estate, Inc.

Office: 321.242.2882 x 209

Cell: 321.423.4305

Courtney@JMRealEstate.com

Information contained herein has been obtained from others and is considered to be reliable; however, a prospective purchaser, agent, or lessee is expected to verify all information to their satisfaction. We make no guarantee, warranty, or representations herein. Licensed Real Estate Broker.