

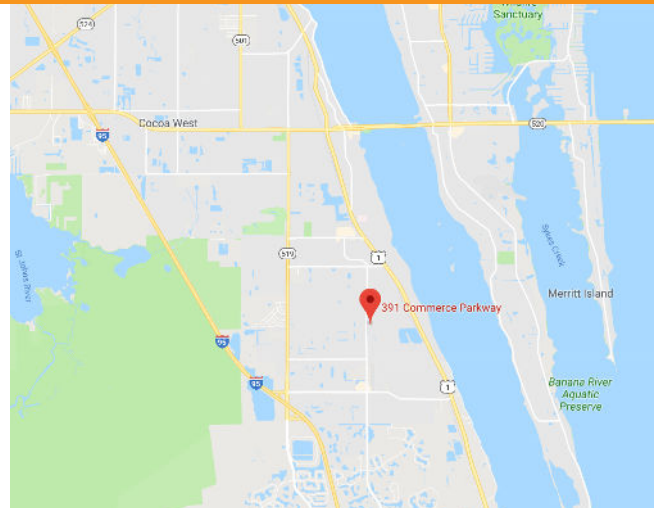
MEDICAL / OFFICE SPACE FOR LEASE

PARKSIDE PROFESSIONAL CENTER

389 Commerce Parkway, Rockledge, FL 32955



- Located Just 2 Miles from Wuesthoff Hospital
- Main Entrance & Signage on Murrell Road
- Suite 160 - 2,500 SF Built-Out Space
- Available for Medical or Office Use
- Beautifully Built-Out, Turnkey Suite!
- Reception/Waiting, 4 Exam Rooms, Lab, Nurses Station, 3 Private Offices, Breakroom & 2 ADA Restrooms
- Great Parking and Easy Access
- \$22/SF/YR Gross Lease



JMREALESTATE.COM

Nicole Reed

JM Real Estate, Inc.

Office: 321.242.2882 x 201

Cell: 314.795.4339

Nicole@JMRealEstate.com

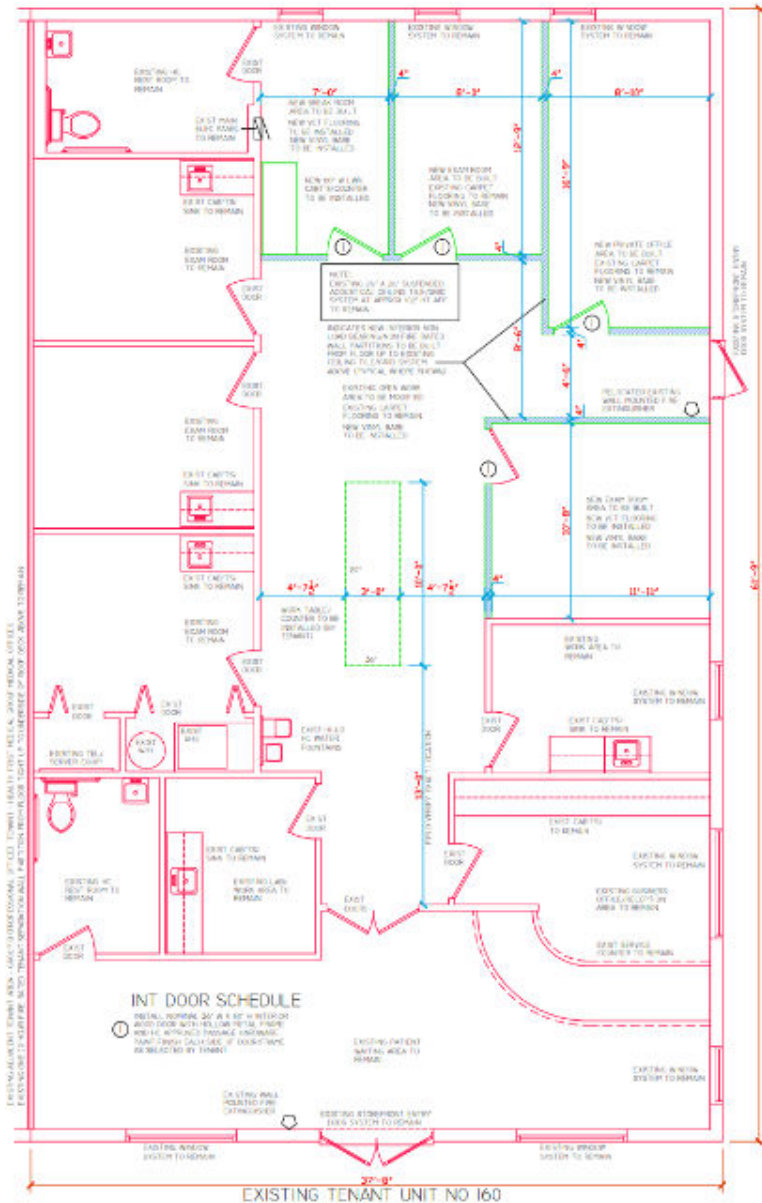
Information contained herein has been obtained from others and is considered to be reliable; however, a prospective purchaser, agent, or lessee is expected to verify all information to their satisfaction. We make no guarantee, warranty, or representations herein. Licensed Real Estate Broker.

MEDICAL / OFFICE SPACE FOR LEASE

PARKSIDE PROFESSIONAL CENTER

389 Commerce Parkway, Rockledge, FL 32955

2,500 SF



JMREALESTATE.COM

Nicole Reed

JM Real Estate, Inc.

Office: 321.242.2882 x 201

Cell: 314.795.4339

Nicole@JMRealEstate.com

Information contained herein has been obtained from others and is considered to be reliable; however, a prospective purchaser, agent, or lessee is expected to verify all information to their satisfaction. We make no guarantee, warranty, or representations herein. Licensed Real Estate Broker.

MEDICAL / OFFICE SPACE FOR LEASE

PARKSIDE PROFESSIONAL CENTER

389 Commerce Parkway, Rockledge, FL 32955



DEMOGRAPHICS	1 mile	3 mile	5 mile
2023 Population	7,163	43,079	92,292
2028 Pop Projection	7,287	44,246	95,112
Growth 2023-2028	0.3%	0.5%	0.6%
Median Age	46.1	46.1	46.3
Bachelor's or Higher	27%	33%	30%
Avg. HH Income	\$101,303	\$96,764	\$87,349



JMREALESTATE.COM

Nicole Reed
JM Real Estate, Inc.
Office: 321.242.2882 x 201
Cell: 314.795.4339
Nicole@JMRealEstate.com

MEDICAL / OFFICE SPACE FOR LEASE

PARKSIDE PROFESSIONAL CENTER

389 Commerce Parkway, Rockledge, FL 32955



JMREALESTATE.COM

Nicole Reed
JM Real Estate, Inc.
Office: 321.242.2882 x 201
Cell: 314.795.4339
Nicole@JMRealEstate.com

Information contained herein has been obtained from others and is considered to be reliable; however, a prospective purchaser, agent, or lessee is expected to verify all information to their satisfaction. We make no guarantee, warranty, or representations herein. Licensed Real Estate Broker.