

INDUSTRIAL LAND LOT FOR LEASE

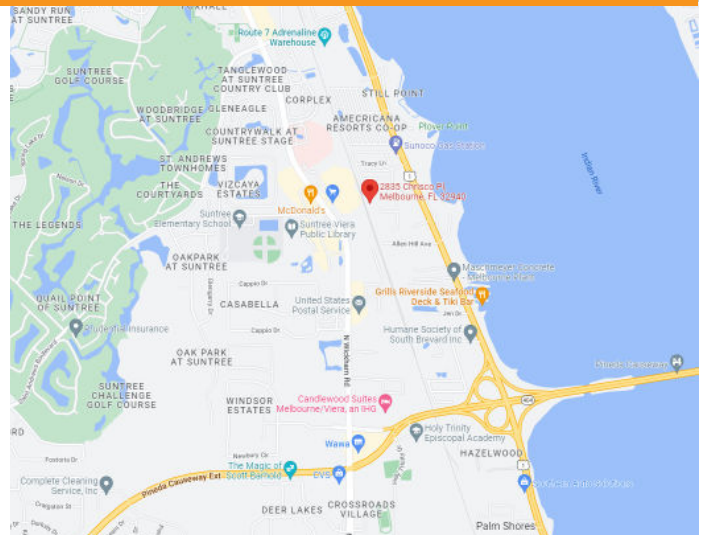
2840 CHRISCO PLACE

Melbourne, FL 32940

FOR LEASE



- Land Lot Available for Lease
- Located Just off US 1 with Quick Access to the Pineda Causeway Connecting I-95 to Beachside
- Lot #8, 1.20 Acres of Industrial Zoned Land
- Cleared and Level Lot
- Water & Electric to the Site
- Fenced with Gate Access to Lot
- Illuminated with LED Lights
- \$3,500 per Month plus Tax



Nicole Reed

JM Real Estate, Inc.
Office: 321.242.2882 x 201
Cell: 314.795.4339
Nicole@JMRealEstate.com



COMMERCIAL
MANAGEMENT
LEASING
SALES

Terry Winton

JM Real Estate, Inc.
Office: 321.242.2882 x 217
Cell: 321.616.3070
Terry@JMRealEstate.com

INDUSTRIAL LAND LOT FOR LEASE

2840 CHRISCO PLACE

Melbourne, FL 32940



Nicole Reed

JM Real Estate, Inc.
Office: 321.242.2882 x 201
Cell: 314.795.4339
Nicole@JMRealEstate.com



COMMERCIAL
MANAGEMENT
LEASING
SALES

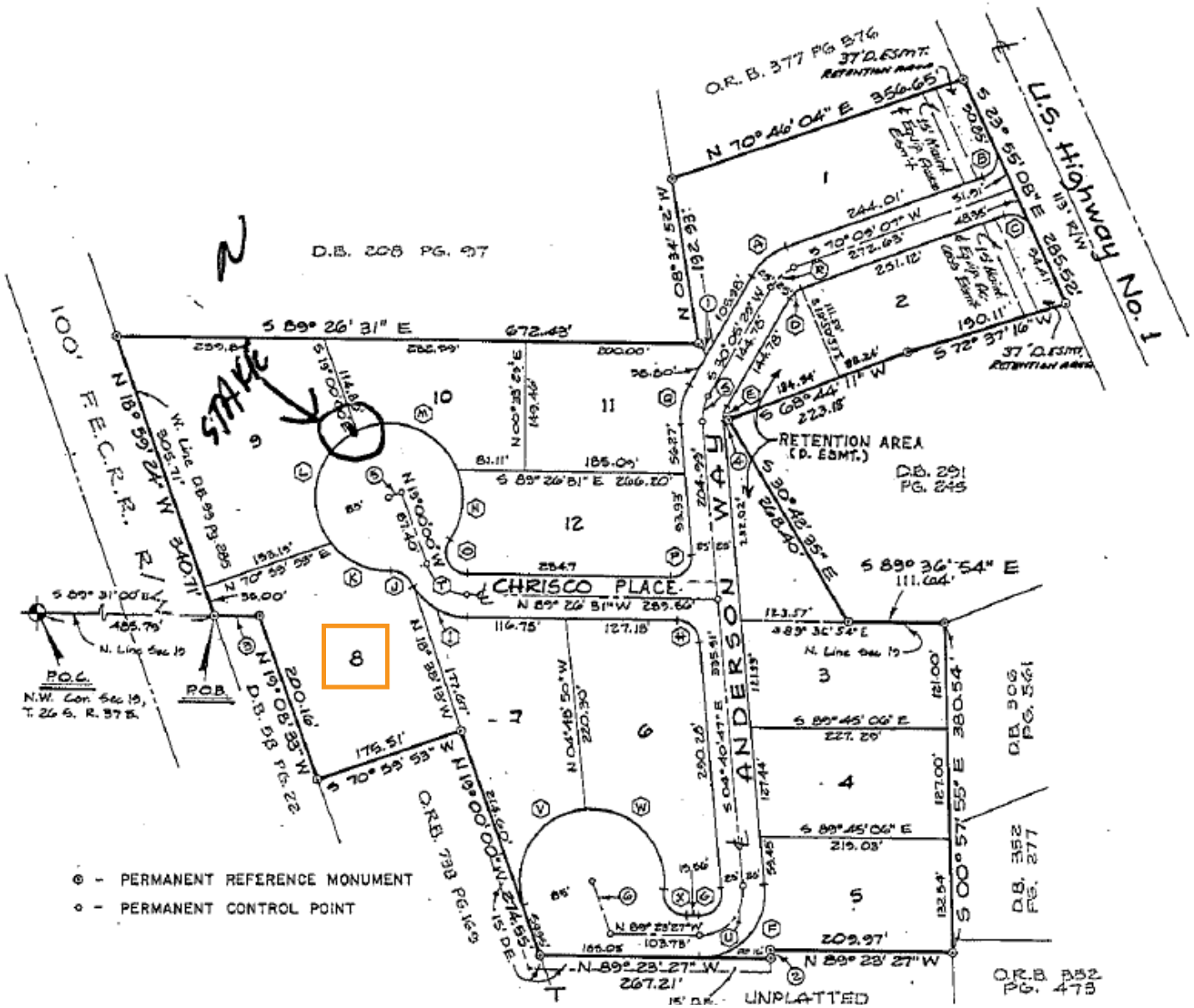
Terry Winton

JM Real Estate, Inc.
Office: 321.242.2882 x 217
Cell: 321.616.3070
Terry@JMRealEstate.com

Information contained herein has been obtained from others and is considered to be reliable; however, a prospective purchaser, agent, or lessee is expected to verify all information to their satisfaction. We make no guarantee, warranty, or representations herein. Licensed Real Estate Broker.

INDUSTRIAL LAND LOT FOR LEASE

2840 CHRISCO PLACE
Melbourne, FL 32940



Nicole Reed
 JM Real Estate, Inc.
 Office: 321.242.2882 x 201
 Cell: 314.795.4339
 Nicole@JMRealEstate.com

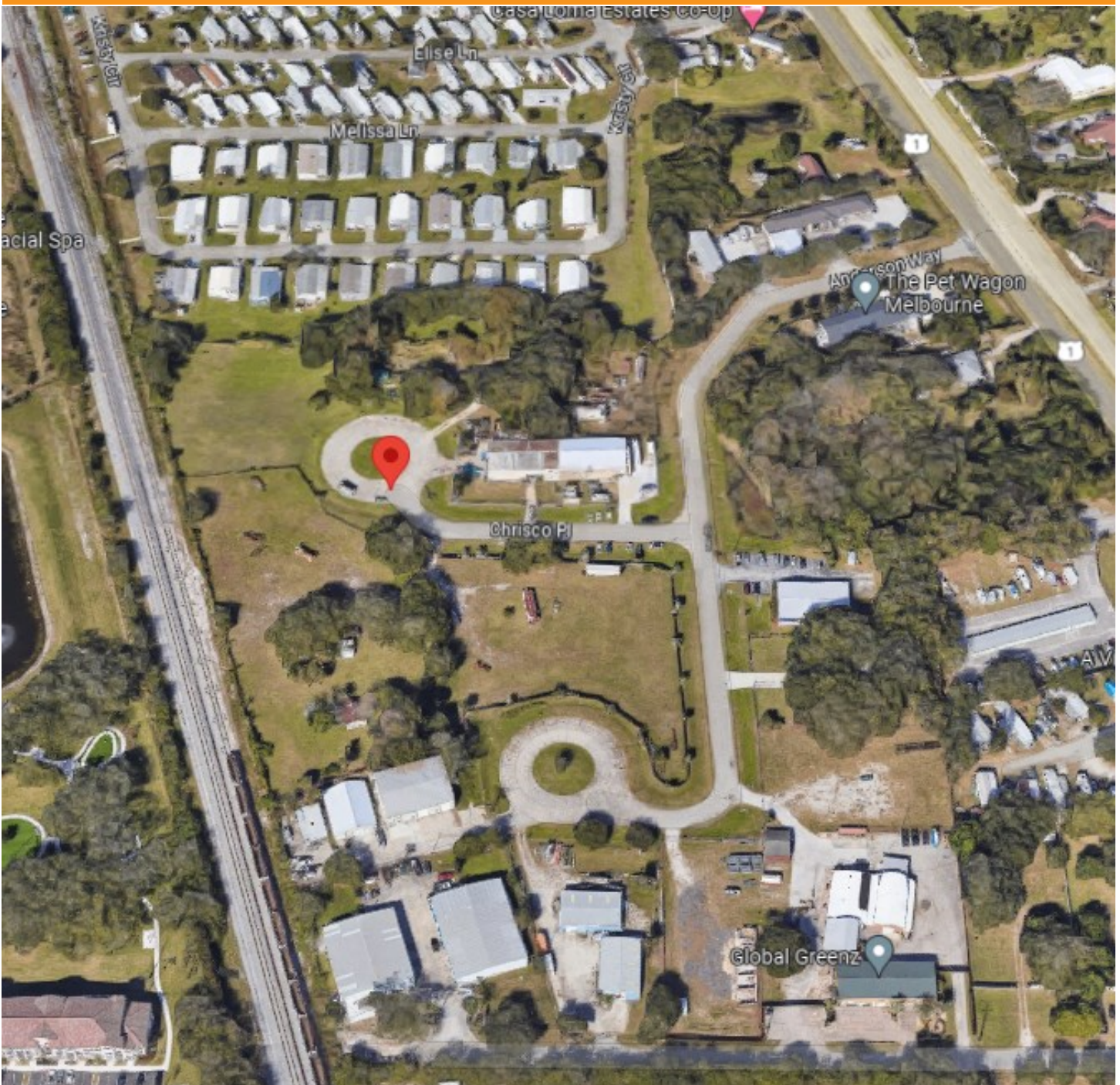


COMMERCIAL
 MANAGEMENT
 LEASING
 SALES

Terry Winton
 JM Real Estate, Inc.
 Office: 321.242.2882 x 217
 Cell: 321.616.3070
 Terry@JMRealEstate.com

INDUSTRIAL LAND LOT FOR LEASE

2840 CHRISCO PLACE
Melbourne, FL 32940



Nicole Reed

JM Real Estate, Inc.
Office: 321.242.2882 x 201
Cell: 314.795.4339
Nicole@JMRealEstate.com



COMMERCIAL
MANAGEMENT
LEASING
SALES

Terry Winton

JM Real Estate, Inc.
Office: 321.242.2882 x 217
Cell: 321.616.3070
Terry@JMRealEstate.com

Information contained herein has been obtained from others and is considered to be reliable; however, a prospective purchaser, agent, or lessee is expected to verify all information to their satisfaction. We make no guarantee, warranty, or representations herein. Licensed Real Estate Broker.