

OFFICE SPACE FOR LEASE

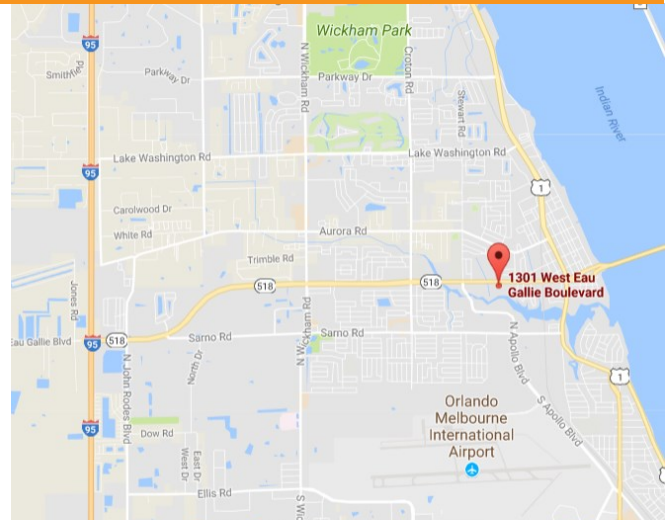
# HICKORY PLACE

1301 W. Eau Gallie Blvd., Melbourne, FL 32935



FOR LEASE

- Excellent Location on Major Melbourne Thoroughfare
- Easy Access to I-95 & US 1
- Upscale Façade, Ample Parking, Metal Roof
- Monument & Building Signage
- Beautiful Interior, Solid Wood Doors, Etc.
- Suite 102 - 1,400 SF - Office with Loft
- Unique Suite with Rear Balcony Porch!
- Reception, 5 Offices, Kitchenette Area, Upstairs Loft Office, 2 Restrooms, 1 has Shower, Storage Area
- Responsive Local Owner
- \$22/SF/YR Modified Gross



JMREALESTATE.COM



COMMERCIAL  
MANAGEMENT  
LEASING  
SALES

Contact:

**Nicole Reed**

JM Real Estate, Inc.

Office: 321.242.2882 x 201

Cell: 314.795.4339

Nicole@JMRealEstate.com

Information contained herein has been obtained from others and is considered to be reliable; however, a prospective purchaser, agent, or lessee is expected to verify all information to their satisfaction. We make no guarantee, warranty, or representations herein. Licensed Real Estate Broker.

OFFICE SPACE FOR LEASE

# HICKORY PLACE

1301 W. Eau Gallie Blvd., Melbourne, FL 32935



JMREALESTATE.COM



COMMERCIAL  
MANAGEMENT  
LEASING  
SALES

Contact:

**Nicole Reed**

JM Real Estate, Inc.

Office: 321.242.2882 x 201

Cell: 314.795.4339

Nicole@JMRealEstate.com

Information contained herein has been obtained from others and is considered to be reliable; however, a prospective purchaser, agent, or lessee is expected to verify all information to their satisfaction. We make no guarantee, warranty, or representations herein. Licensed Real Estate Broker.

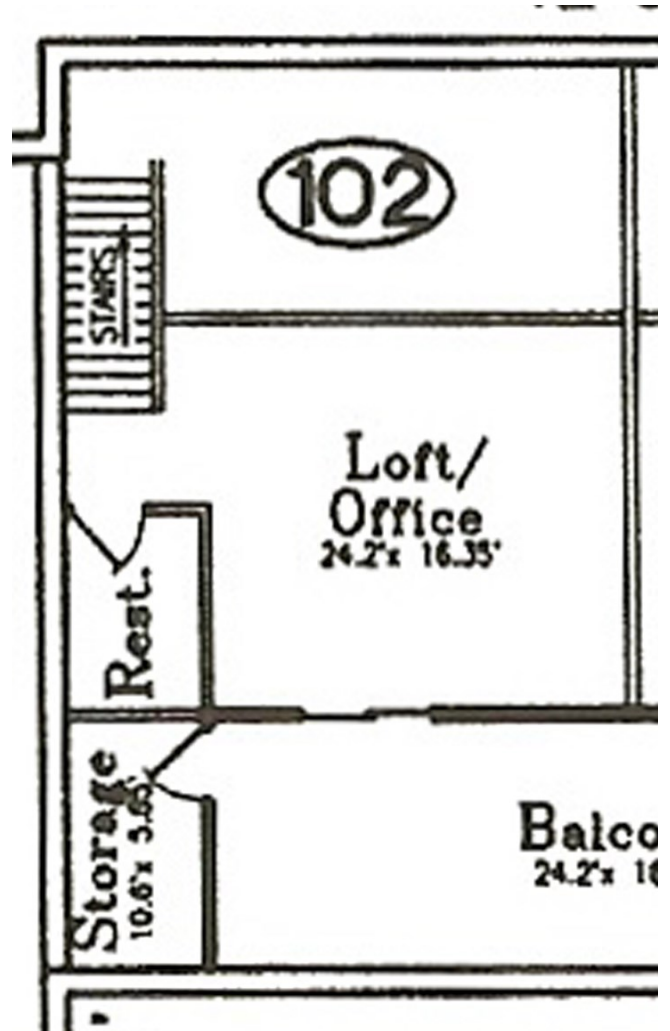
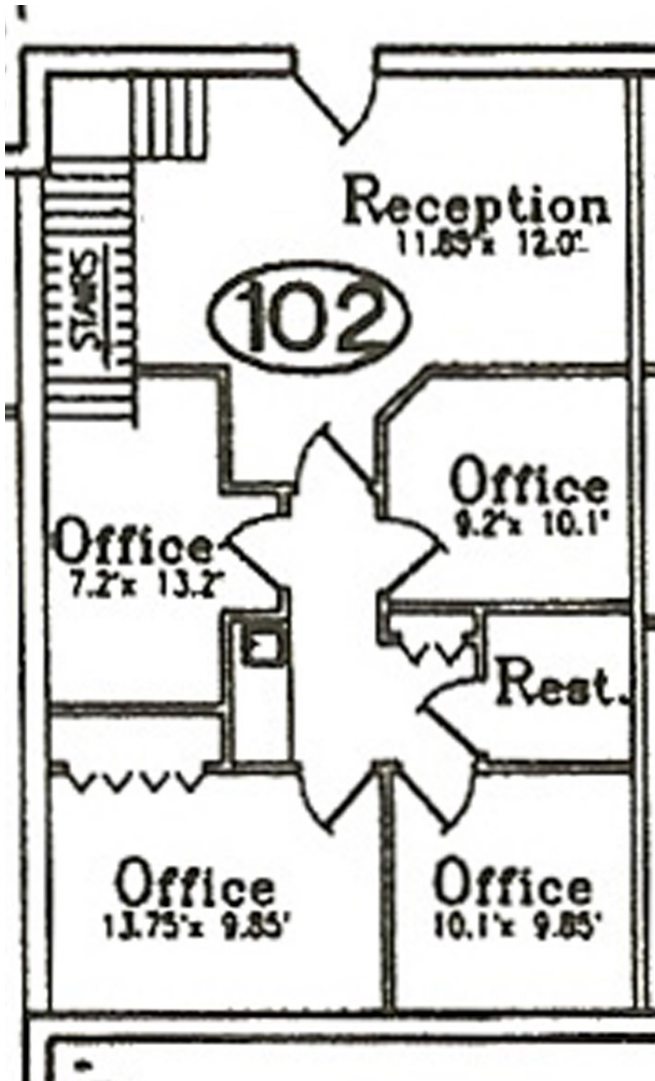
OFFICE SPACE FOR LEASE

# HICKORY PLACE

1301 W. Eau Gallie Blvd., Melbourne, FL 32935

First Floor

Second Floor



JMREALESTATE.COM



COMMERCIAL  
MANAGEMENT  
LEASING  
SALES

Contact:

**Nicole Reed**

JM Real Estate, Inc.

Office: 321.242.2882 x 201

Cell: 314.795.4339

Nicole@JMRealEstate.com