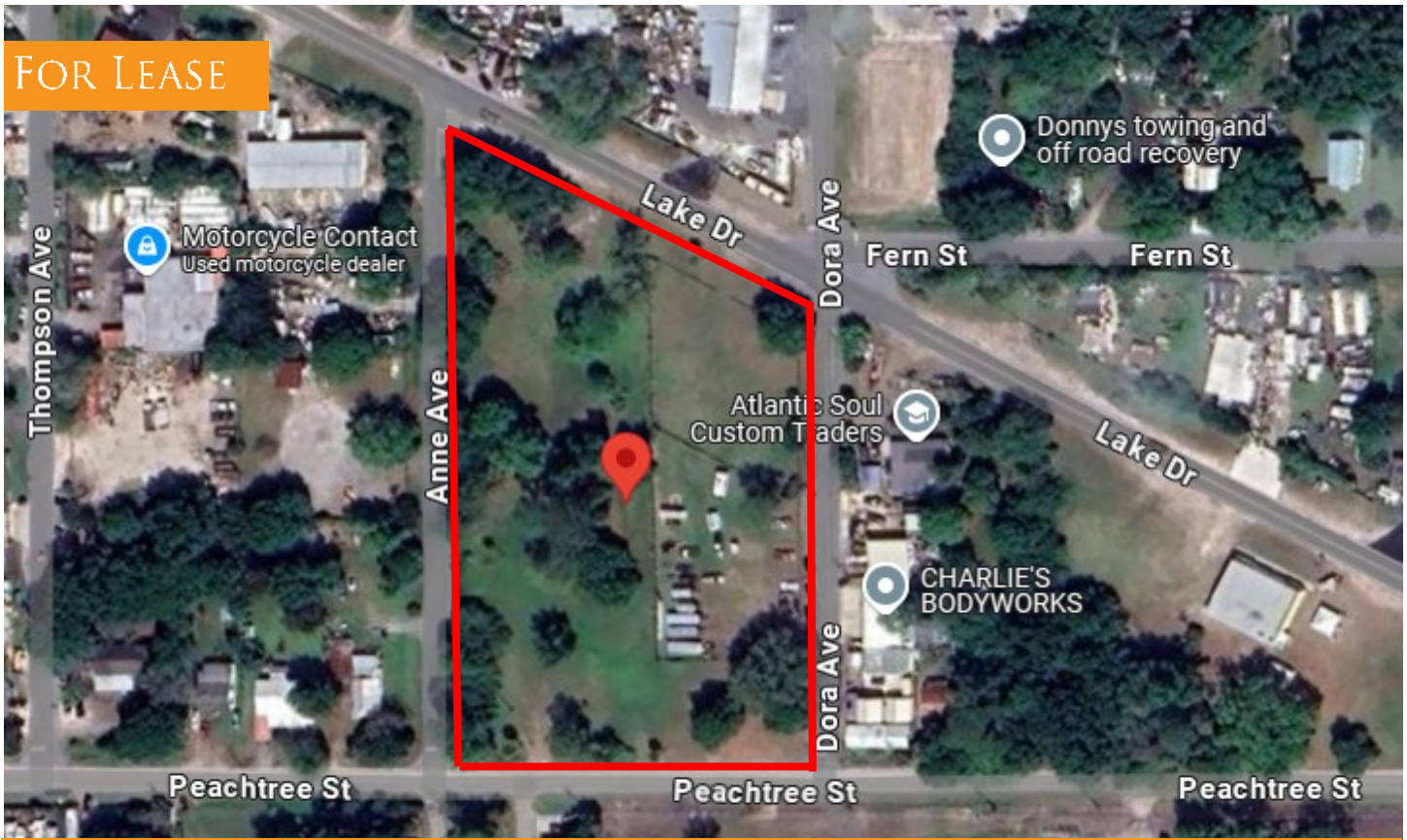


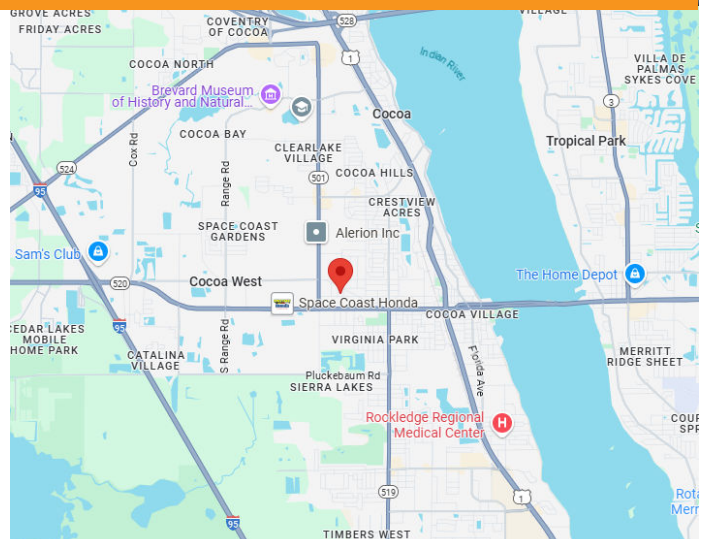
## COMMERCIAL LAND LOT FOR LEASE

# 1408 W PEACHTREE ST Cocoa, FL 32922

FOR LEASE



- Land Lot Available for Lease
- Located Just off 520 in Cocoa with Quick Access to US 1 and I-95
- 3.08 Acres of Land
- Divisible - 1 to 3 Acres
- BU-2 Retail, Warehousing & Wholesale Commercial
- \$2,000 per Acre per Month plus Tax



JMREALESTATE.COM



COMMERCIAL  
MANAGEMENT  
LEASING  
SALES

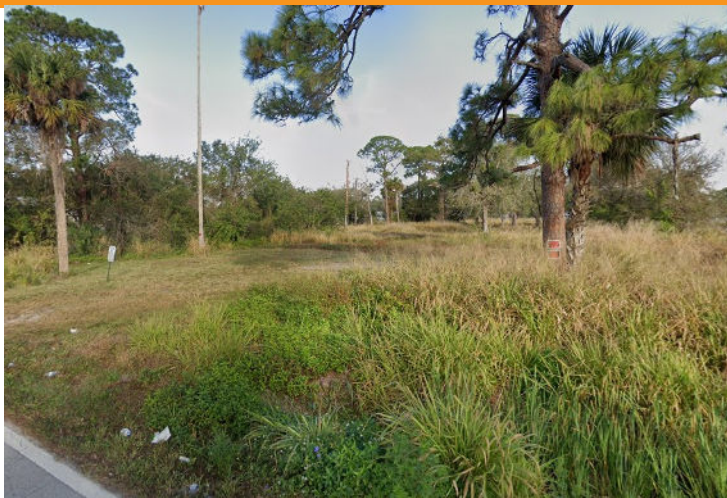
**Terry Winton**  
JM Real Estate, Inc.  
Office: 321.242.2882 x 217  
Cell: 321.616.3070  
Terry@JMRealEstate.com

COMMERCIAL LAND LOT FOR LEASE

1408 W PEACHTREE ST  
Cocoa, FL 32922



Divisible Land Lot in Cocoa  
Level Lot, Landlord willing to Divide for up to 3 Tenants



JMREALESTATE.COM



COMMERCIAL  
MANAGEMENT  
LEASING  
SALES

**Terry Winton**  
JM Real Estate, Inc.  
Office: 321.242.2882 x 217  
Cell: 321.616.3070  
Terry@JMRealEstate.com

Information contained herein has been obtained from others and is considered to be reliable; however, a prospective purchaser, agent, or lessee is expected to verify all information to their satisfaction. We make no guarantee, warranty, or representations herein. Licensed Real Estate Broker.