

OFFICE SPACE FOR LEASE

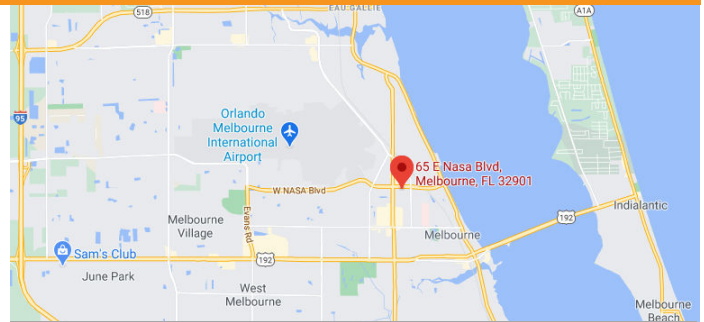
NASA OFFICE BUILDING

65 East Nasa Blvd., Melbourne, FL 32901

FOR LEASE



- 2-Story Office Building
- Ample Parking in Front and Rear of Building
- In the Heart of Melbourne's Business District
- Within 1 Mile of Melbourne International Airport & Holmes Regional Hospital
- Owner is Open to Some Modifications
- Monument Signage
- Common Hall with Directory
- 1st & 2nd Floor Suites Available
- Suite 104 - 1,445 SF, Suite 106 - 1,415 SF,
- Suite 106 has Private Restroom, other Suites Share Common Restrooms
- 1st Floor \$14/SF/YR + \$7.02/SF/YR NNN
- 2nd Floor \$12/SF/YR + \$7.02/SF/YR NNN
- Electric & Water are Included in CAM



Demographics	1 mile	3 mile	5 mile
2023 Population	5,515	45,053	140,277
2028 Pop Projection	5,698	46,466	145,345
Growth 2023-2028	0.7%	0.6%	0.7%
Median Age	49.2	44.9	45.7
Bachelor's or Higher	23%	26%	29%
Average Income	\$54,429	\$70,466	\$76,131

Kate Gomes

JM Real Estate, Inc.
Office: 321.242.2882 x 207
Cell: 707.955.4181
Kate@JMRealEstate.com



COMMERCIAL
MANAGEMENT
LEASING
SALES

Courtney Smith

JM Real Estate, Inc.
321.242.2882
Cell: 321.423.4305
Courtney@jJMRealEstate.com

Information contained herein has been obtained from others and is considered to be reliable; however, a prospective purchaser, agent, or lessee is expected to verify all information to their satisfaction. We make no guarantee, warranty, or representations herein. Licensed Real Estate Broker.

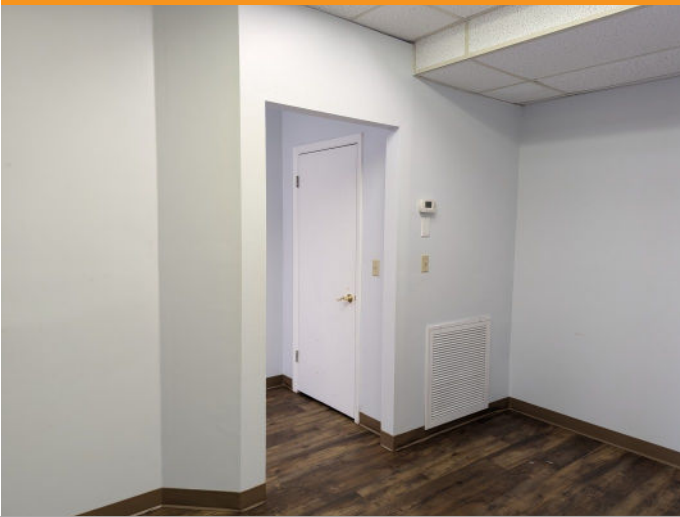
OFFICE SPACE FOR LEASE

NASA OFFICE BUILDING

65 East Nasa Blvd., Melbourne, FL 32901



Suite 104 - 1,415 SF



Kate Gomes

JM Real Estate, Inc.
Office: 321.242.2882 x 207
Cell: 707.955.4181
Kate@JMRealEstate.com



COMMERCIAL
MANAGEMENT
LEASING
SALES

Courtney Smith

JM Real Estate, Inc.
321.242.2882
Cell: 321.423.4305

Courtney@jJMRealEstate.com

Information contained herein has been obtained from others and is considered to be reliable; however, a prospective purchaser, agent, or lessee is expected to verify all information to their satisfaction. We make no guarantee, warranty, or representations herein. Licensed Real Estate Broker.

OFFICE SPACE FOR LEASE

NASA OFFICE BUILDING

65 East Nasa Blvd., Melbourne, FL 32901



Suite 106 - 1,415 SF



Kate Gomes

JM Real Estate, Inc.
Office: 321.242.2882 x 207
Cell: 707.955.4181
Kate@JMRealEstate.com



COMMERCIAL
MANAGEMENT
LEASING
SALES

Courtney Smith

JM Real Estate, Inc.
321.242.2882
Cell: 321.423.4305
Courtney@jJMRealEstate.com

Information contained herein has been obtained from others and is considered to be reliable; however, a prospective purchaser, agent, or lessee is expected to verify all information to their satisfaction. We make no guarantee, warranty, or representations herein. Licensed Real Estate Broker.

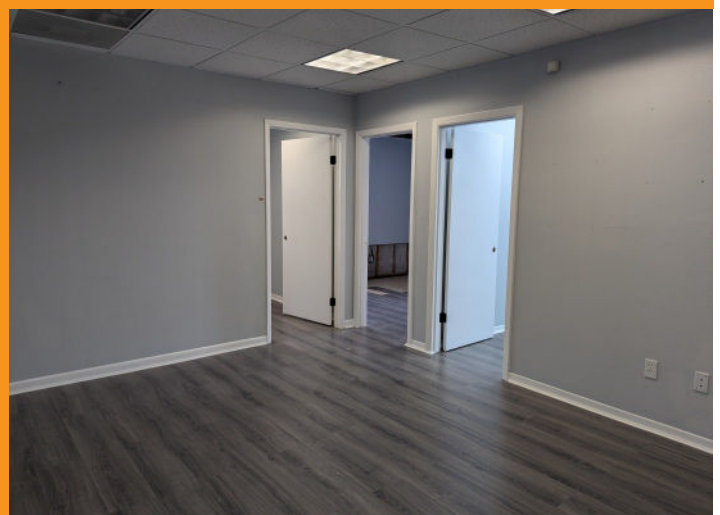
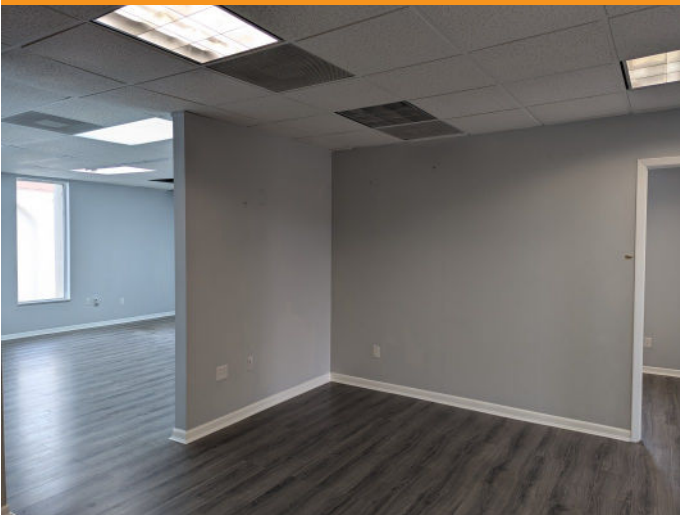
OFFICE SPACE FOR LEASE

NASA OFFICE BUILDING

65 East Nasa Blvd., Melbourne, FL 32901



Suite 202 - 1,465 SF



Kate Gomes

JM Real Estate, Inc.
Office: 321.242.2882 x 207
Cell: 707.955.4181
Kate@JMRealEstate.com



COMMERCIAL
MANAGEMENT
LEASING
SALES

Courtney Smith

JM Real Estate, Inc.
321.242.2882
Cell: 321.423.4305

Courtney@JMRealEstate.com

Information contained herein has been obtained from others and is considered to be reliable; however, a prospective purchaser, agent, or lessee is expected to verify all information to their satisfaction. We make no guarantee, warranty, or representations herein. Licensed Real Estate Broker.

OFFICE SPACE FOR LEASE

NASA OFFICE BUILDING

65 East Nasa Blvd., Melbourne, FL 32901



Kate Gomes

JM Real Estate, Inc.
Office: 321.242.2882 x 207
Cell: 707.955.4181
Kate@JMRealEstate.com



COMMERCIAL
MANAGEMENT
LEASING
SALES

Courtney Smith

JM Real Estate, Inc.
321.242.2882
Cell: 321.423.4305
Courtney@jJMRealEstate.com

Information contained herein has been obtained from others and is considered to be reliable; however, a prospective purchaser, agent, or lessee is expected to verify all information to their satisfaction. We make no guarantee, warranty, or representations herein. Licensed Real Estate Broker.