



BREVARD MEDICAL CITY

6555 N Wickham Road, Suite D104 | Melbourne, FL 32940

2,128 SF Office/Medical Space | NNN Lease | Available August 1, 2026

\$28.00/SF/YR Base Rent + \$4.99/SF/YR NNN

PROPERTY HIGHLIGHTS

- 2,128 SF Office/Medical Space
- High Ceilings with Modern Industrial Finish
- Large Storefront Windows
- Modern Flooring & Updated Finishes
- Storage and Back Room Area
- Direct Frontage on N. Wickham Road
- Abundant Natural Light
- Full Build-Out
- Excellent Condition
- Turnkey – Ready for Occupancy

PROPERTY DESCRIPTION

This 2,128 SF office/medical space at Brevard Medical City offers high ceilings with a modern industrial finish, large storefront windows providing abundant natural light, modern flooring and updated interior finishes, a storage and back room area, and is a turnkey office space ready for occupancy. Located at 6555 N Wickham Road with direct frontage, this suite is available August 1, 2026.

Nicole Reed
Broker Associate

Cell: 314.795.4339 | Nicole@JMRealEstate.com

Michael Corbitt
Licensed Commercial Agent

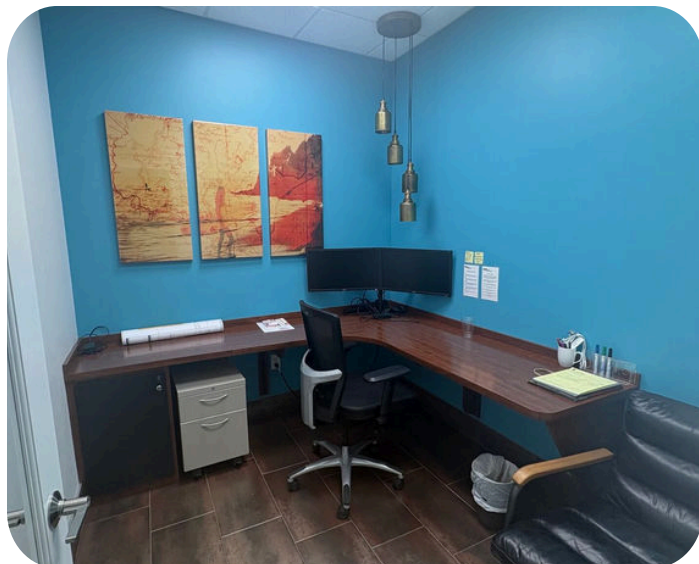
Cell: 404.376.3374 | Michael@JMRealEstate.com

JM Real Estate, Inc. | 6022 Farcenda Place, Melbourne, FL 32940 | JMRealEstate.com

Strategic Commercial Real Estate Solutions | Leasing • Sales • Management • Investments

Information contained herein has been obtained from sources deemed reliable but is not guaranteed. Licensed Real Estate Broker.

BREVARD MEDICAL CITY | SUITE D104



PROPERTY OVERVIEW

Located at Brevard Medical City, this 2,128 SF office/medical suite offers a modern professional environment with high ceilings, large storefront windows, abundant natural light, updated finishes, and direct frontage on N. Wickham Road. The space is turnkey and ready for occupancy beginning August 1, 2026.

PROPERTY HIGHLIGHTS

- 2,128 SF Office/Medical Space
- Available August 1, 2026
- \$28.00/SF/YR Base Rent + \$4.99/SF/YR NNN
- High Ceilings with Modern Industrial Finish
- Large Storefront Windows
- Abundant Natural Light
- Modern Flooring & Updated Finishes
- Storage / Back Room Area
- Direct Frontage on N. Wickham Road
- Full Build-Out
- Excellent Condition
- Turnkey - Ready for Occupancy

PROPERTY LOCATION



6555 N Wickham Road, Suite D104
Melbourne, FL 32940

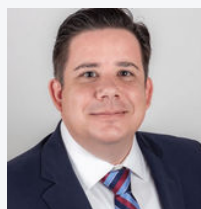
SCAN FOR FULL PROPERTY DETAILS



Scan to view the complete property listing, additional photos, property information, and contact details.



Nicole Reed
Broker Associate
Cell: 314.795.4339
Nicole@JMRealEstate.com



Michael Corbitt
Licensed Commercial Agent
Cell: 404.376.3374
Michael@JMRealEstate.com