

FLEX & OFFICE SPACE FOR LEASE

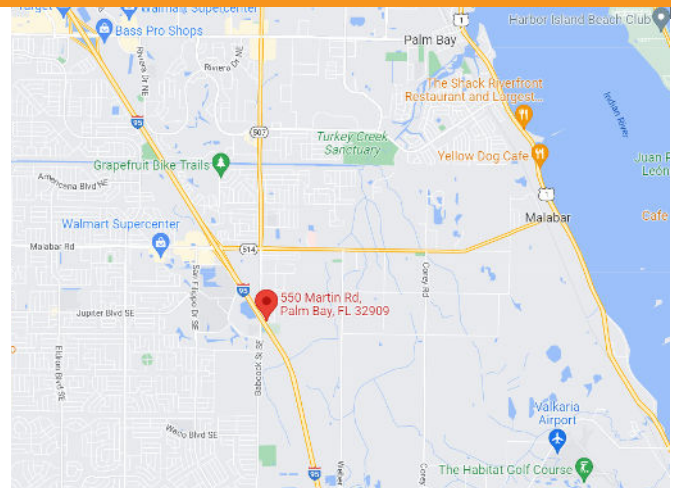
# 550 MARTIN ROAD SE

Palm Bay, FL 32909



## New Construction

- New Construction Building in Palm Bay
- Visibility from I-95 & Babcock Street!
- Zoning GC - General Commercial
- 1,050 SF Bays with Roll-up Doors
- Private Restrooms for Each Bay
- 2 Upstairs Offices 525 SF Each with Private Restrooms
- \$16/SF/YR Modified Gross for Base Unit



**Nicole Reed**  
JM Real Estate, Inc.  
Office: 321.242.2882 x 201  
Cell: 314.795.4339  
Nicole@JMRealEstate.com

FLEX & OFFICE SPACE FOR LEASE

# 550 MARTIN ROAD SE

Palm Bay, FL 32909



COMMERCIAL  
MANAGEMENT  
LEASING  
SALES



**Nicole Reed**  
JM Real Estate, Inc.  
Office: 321.242.2882 x 201  
Cell: 314.795.4339  
Nicole@JMRealEstate.com

Information contained herein has been obtained from others and is considered to be reliable; however, a prospective purchaser, agent, or lessee is expected to verify all information to their satisfaction. We make no guarantee, warranty, or representations herein. Licensed Real Estate Broker.

FLEX & OFFICE SPACE FOR LEASE

# 550 MARTIN ROAD SE

Palm Bay, FL 32909



COMMERCIAL  
MANAGEMENT  
LEASING  
SALES



**Nicole Reed**

JM Real Estate, Inc.

Office: 321.242.2882 x 201

Cell: 314.795.4339

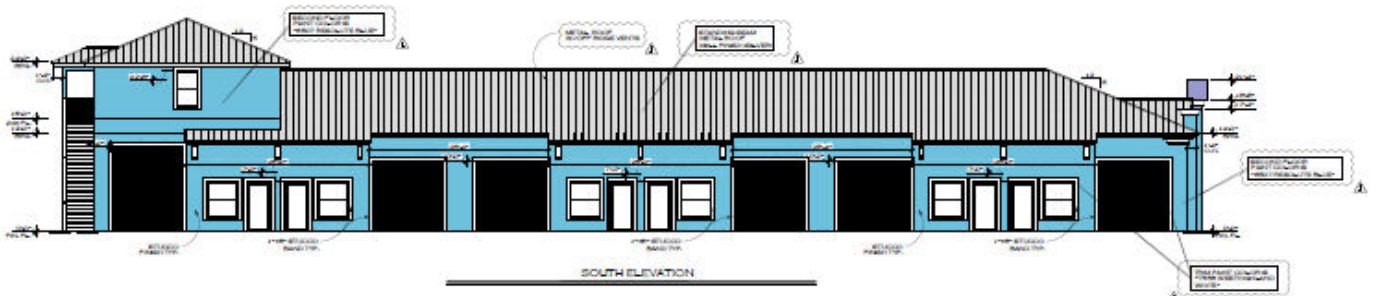
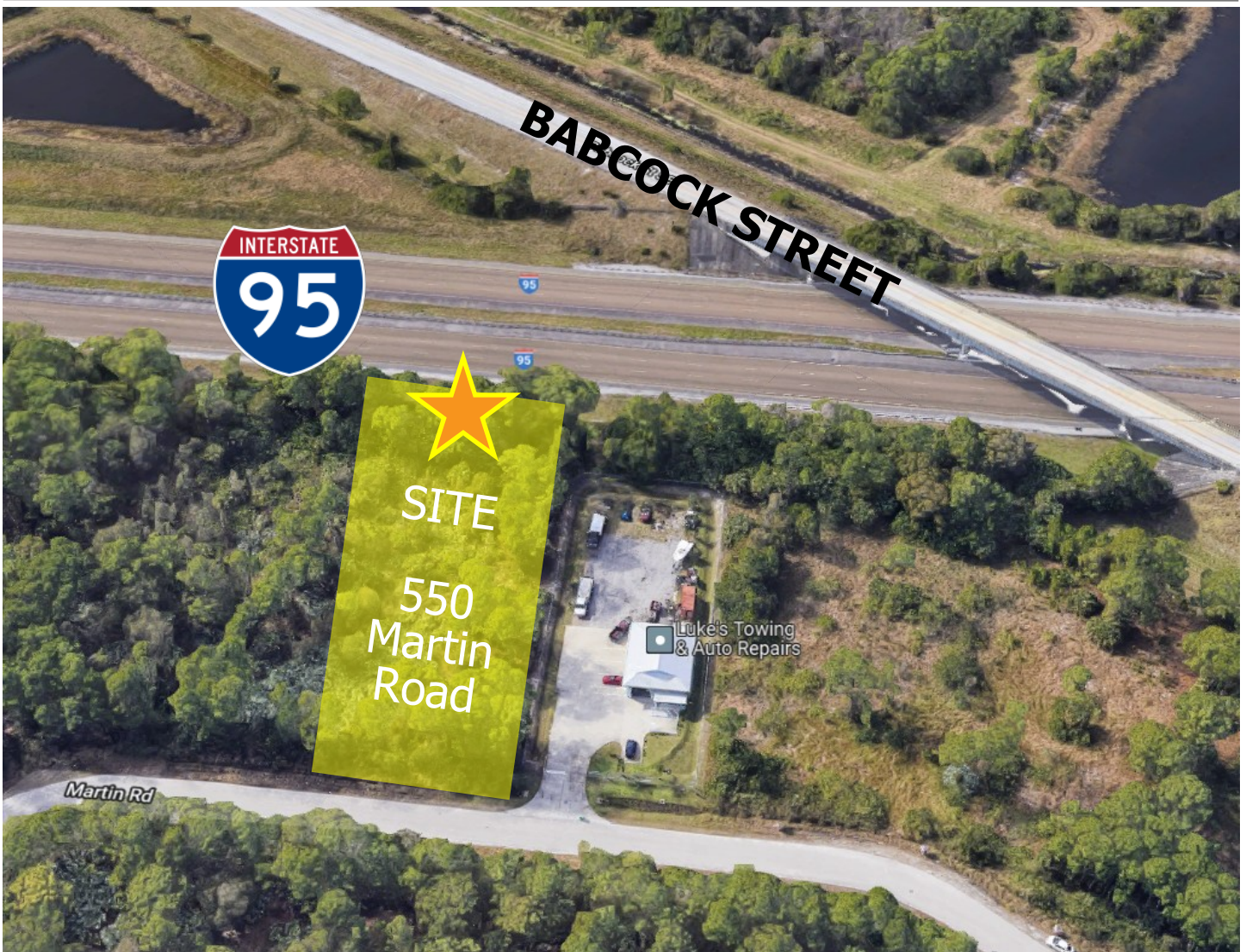
Nicole@JMRealEstate.com

Information contained herein has been obtained from others and is considered to be reliable; however, a prospective purchaser, agent, or lessee is expected to verify all information to their satisfaction. We make no guarantee, warranty, or representations herein. Licensed Real Estate Broker.

FLEX & OFFICE SPACE FOR LEASE

# 550 MARTIN ROAD SE

Palm Bay, FL 32909



COMMERCIAL  
MANAGEMENT  
LEASING  
SALES



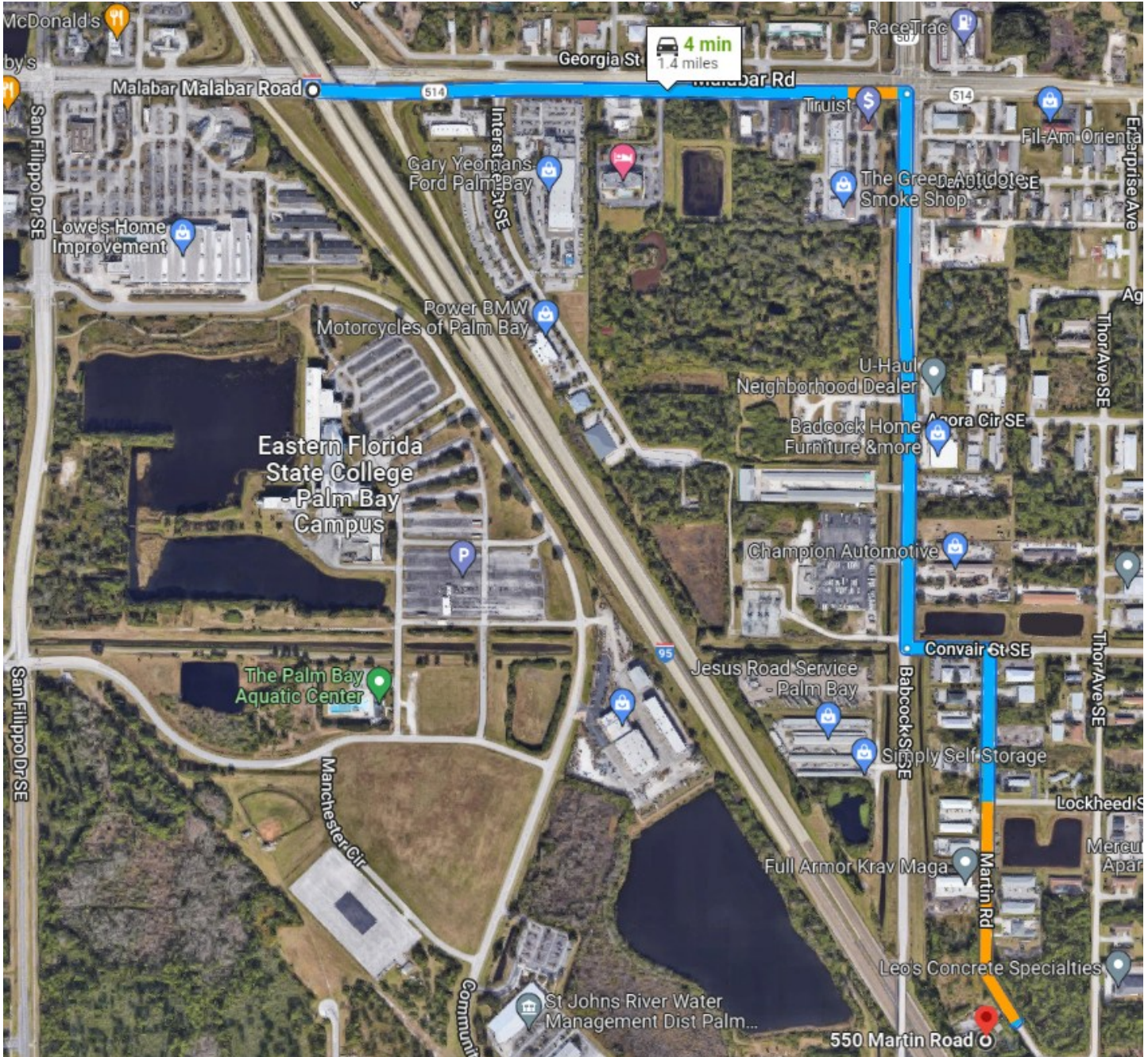
**Nicole Reed**  
JM Real Estate, Inc.  
Office: 321.242.2882 x 201  
Cell: 314.795.4339  
Nicole@JMRealEstate.com

FLEX & OFFICE SPACE FOR LEASE

# 550 MARTIN ROAD SE

Palm Bay, FL 32909

1.4 Miles, 4 Minutes to I-95



COMMERCIAL  
MANAGEMENT  
LEASING  
SALES



**Nicole Reed**

JM Real Estate, Inc.

Office: 321.242.2882 x 201

Cell: 314.795.4339

Nicole@JMRealEstate.com