



INDUSTRIAL LAND LOT FOR LEASE

2835 Chrisco Place | Melbourne, FL 32940

Lot #9 | 1.31 Acres | Industrial Zoned | 3-Year Lease Term

\$3,500/Month + Tax

1.31 Acres

PROPERTY HIGHLIGHTS

- Land Lot Available for Lease
- Lot #9 - 1.31 Acres
- Industrial Zoned Land
- Cleared and Level Lot
- Water Available to Site
- All New Fencing with Barbed Wire
- New 20-Foot Manual Sliding Gate
- Located Just Off US-1
- Quick Access to Pineda Causeway
- Easy Access to I-95 and Beachside
- Adjacent to FL East Coast Railway
- 3-Year Lease Term

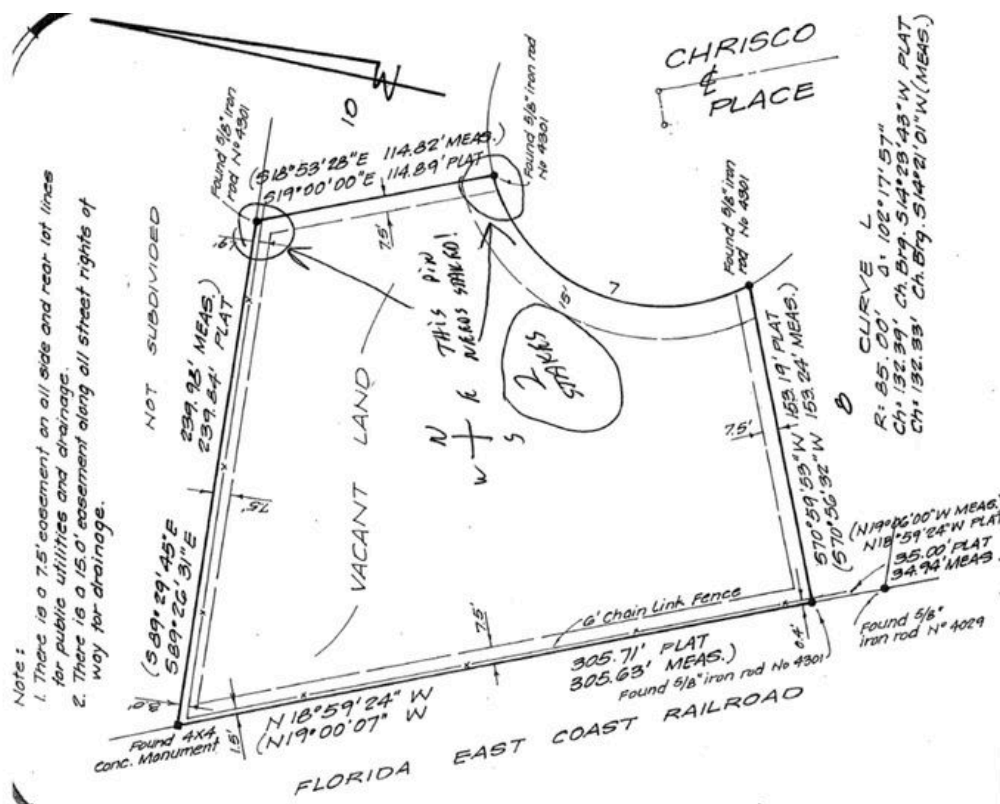
PROPERTY DESCRIPTION

Industrial land lot available for lease in Melbourne, Florida. This 1.31-acre industrial-zoned site is cleared, level, and ready for occupancy. Includes water service, all-new fencing with barbed wire, and a new 20-foot manual sliding gate. Located just off US-1 with direct access to Pineda Causeway connecting I-95 to beachside communities. Ideal for contractor storage, equipment storage, fleet parking, and industrial yard uses.

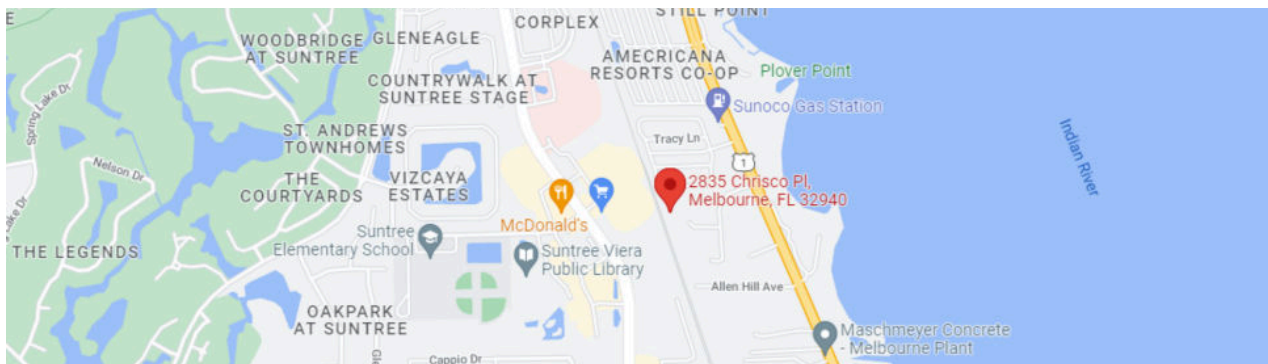
Terry Winton | Commercial Sales Associate, CCIM | JM Real Estate, Inc.

Office: 321.242.2882 x 217 | Cell: 321.616.3070 | Terry@JMRealEstate.com

SITE PLAN / SURVEY



LOCATION MAP



CONTACT FOR LEASING INFORMATION



Terry Winton

Commercial Sales Associate, CCIM | JM Real Estate, Inc.

Office: 321.242.2882 Ext. 217 | Cell: 321.616.3070

Terry@JMRealEstate.com

JMRealEstate.com